

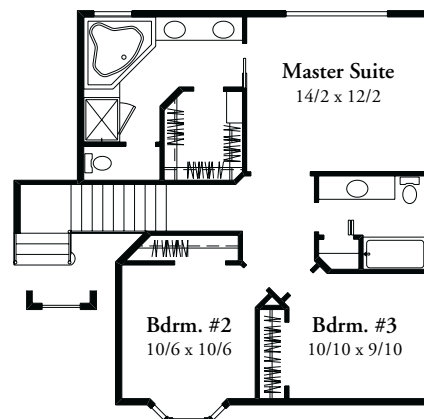
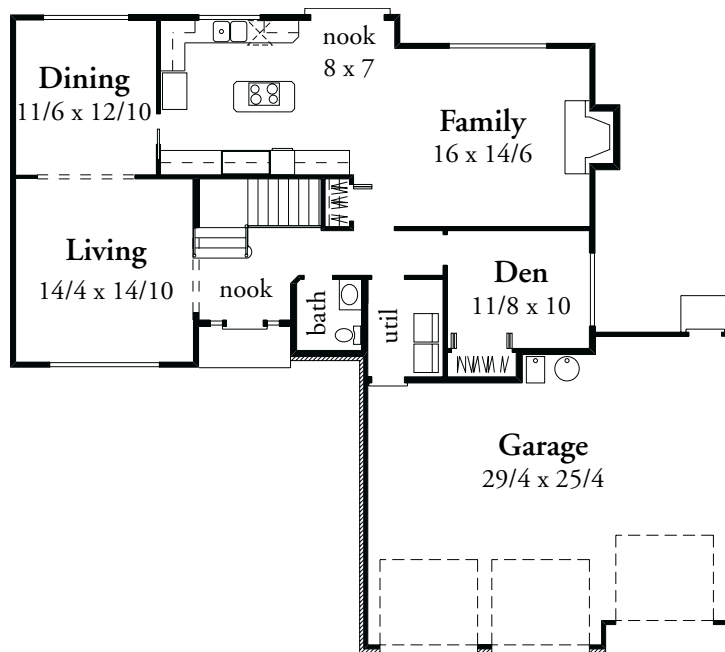
## The Laurelwood

### Stock Plan #2130

#### Special Features:

- 2130 S.F. Total Living Area  
1323 S.F. Main  
804 S.F. Upper
- Elegant Vaulted Foyer
- Elegant Living and Dining rooms, both with special ceiling treatments
- 3 Bedrooms, 2 1/2 baths
- Master Suite includes walk-in closet, double vanity, corner tub and shower
- Main Floor Den
- Spacious Island Kitchen with adjoining Nook
- 694 sf 3 Car Garage
- Overall Exterior dimensions: 59' width x 52' depth

In our effort to constantly update and improve our designs, we reserve the right to modify or change our plans



## The Residential Plan Center

11644 N.E. 80th St. • Kirkland, WA 98033 • (425) 828-4117

[www.NashJonesAnderson.com](http://www.NashJonesAnderson.com)