



[Custom Homes](#)

[Stock Home Plans](#)

[Lodge Style Plans](#)

[Neighborhoods](#)

[Recent Additions](#)

The Brookside II 2027 square feet

Stock Plan #2027 se

Floor Plans

2027 sf Total Living Area

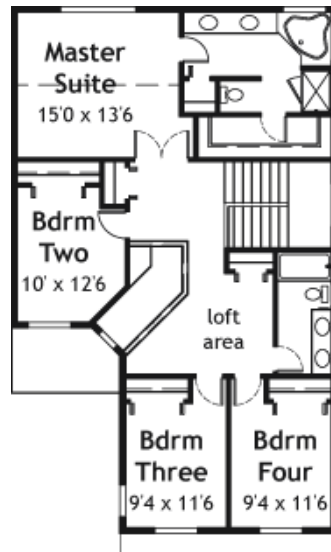
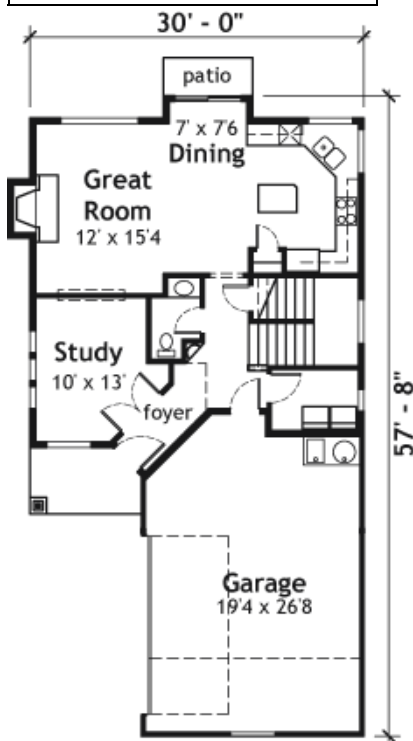
- 866 sf Main
- 1141 sf Upper
- 534 sf Garage

Overall Exterior dimensions:

30'-0" width x 57'-8" depth

Features:

- 4 Bedrooms
- 2.5 Baths
- Narrow Lot Plan
- Upstairs Bonus Room
- Main Floor Study off entry



©2009 Nash Jones Anderson & The Residential Plan Center.
 All information deemed reliable but not guaranteed.
 All rights reserved.