



The Briarwood VII

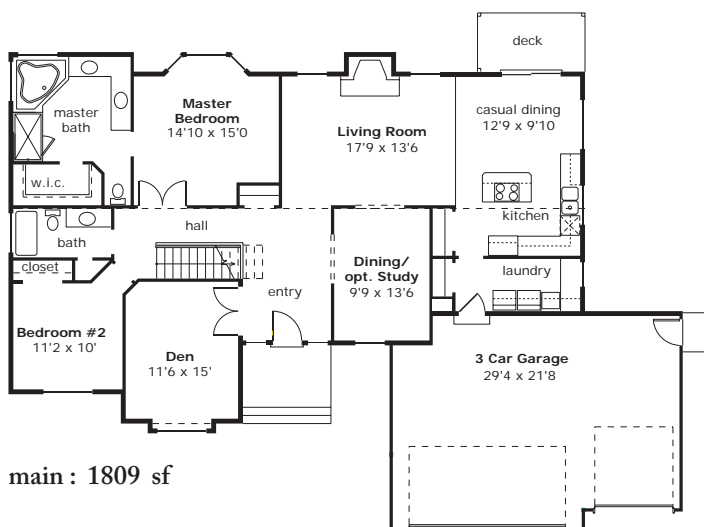
Stock Plan #1809

Special Features:

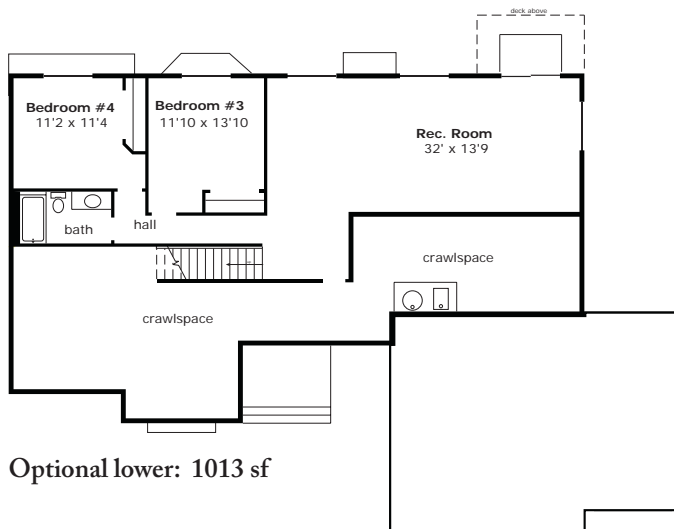
- 1809 s.f. Main
- 1013 s.f. Lower, optional
- 2822 s.f. Total Living Area with finished Daylight Basement
- 2 Bedrooms, 2 Baths on Main level
- 2 Bedrooms, 1 Bath on Lower level
- Master Bedroom with large master bath and double entry doors
- Spacious Island Kitchen with adjoining Breakfast Nook
- Vaulted ceilings at Living Room, Kitchen, Nook and Entry
- Optional Study
- 3 Car Garage
- Overall Exterior dimensions: 69' width X 49' depth

see also Stock Plan #1619

In our effort to constantly update and improve our designs, we reserve the right to modify or change our plans



main : 1809 sf



Optional lower: 1013 sf

The Residential Plan Center

11644 N.E. 80th St. • Kirkland, WA 98033 • (425) 828-4117

www.NashJonesAnderson.com