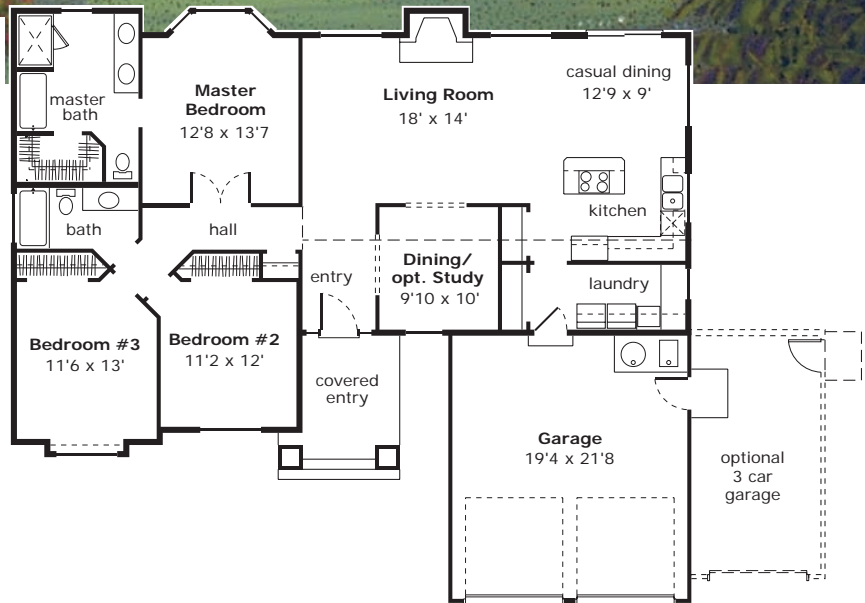


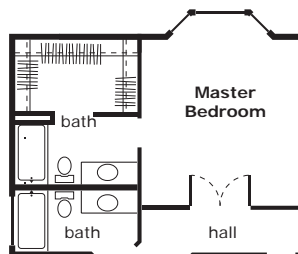
## The Briarwood III A Stock Plan #1647

### Special Features:

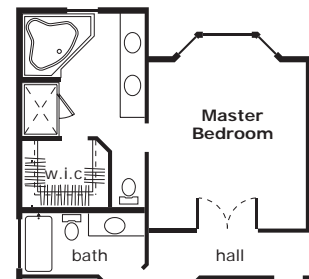
- 1647 S.F. Total Living Area
- 3 Bedrooms
- 2 Baths
- Master Bedroom with large master bath. Two alternate floor plans with differing Master Baths
- Spacious Island Kitchen with adjoining Breakfast Nook
- Vaulted ceilings at Living Room, Kitchen, Nook and Entry
- Optional Study/Dining Room
- Large 2 Car Garage, 3 car opt.
- Overall Exterior dimensions: 56' width X 49' depth



In our effort to constantly update and improve our designs, we reserve the right to modify or change our plans



alt. master bath,  
see #1625



alt. master bath,  
see #1669  
56' width X 51' depth

## The Residential Plan Center

11644 N.E. 80th St. • Kirkland, WA 98033 • (425) 828-4117

[www.NashJonesAnderson.com](http://www.NashJonesAnderson.com)