



The Sherwood III B

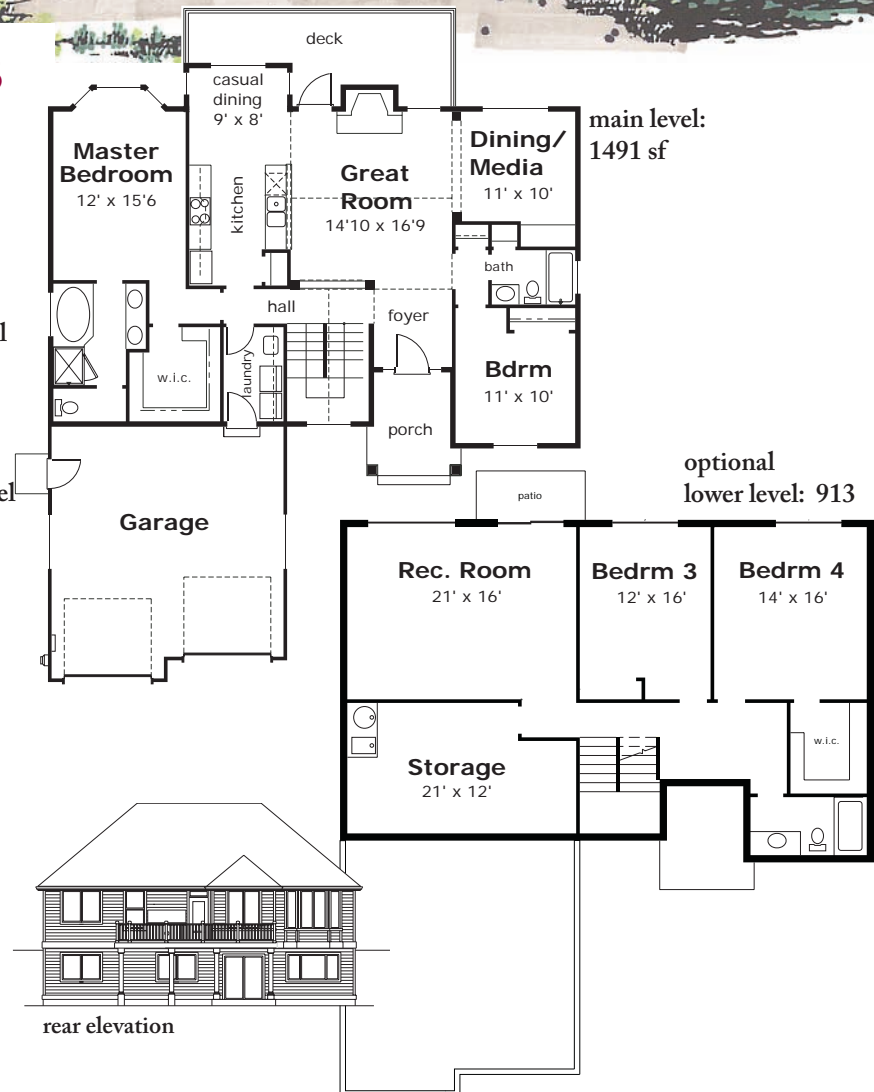
Stock Plan #1491

Special Features:

- 1491 s.f. Main level
913 lower level if finished
2851 s.f. Total with finished
Daylight basement
- 2 Bedrooms, 2 Baths on main level
2 Bedrooms, 1 Bath on lower level
- Special ceiling treatments
create a large open area
- Dining/Media/Study on main level
- 2 car Garage
- Overall Exterior dimensions:
49' width X 57' depth

For related plans see:
#1471, #1605

In our effort to constantly update and
improve our designs, we reserve the
right to modify or change our plans



The Residential Plan Center

11644 N.E. 80th St. • Kirkland, WA 98033 • (425) 828-4117

www.NashJonesAnderson.com