

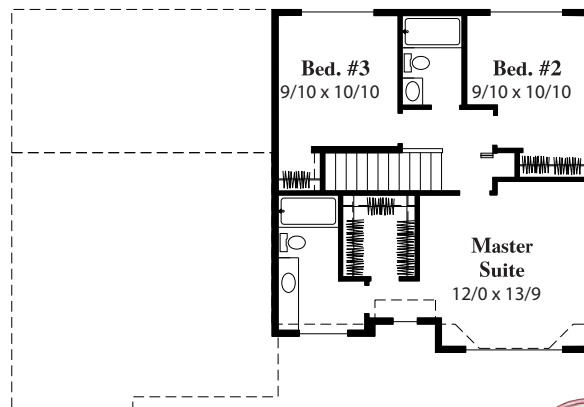
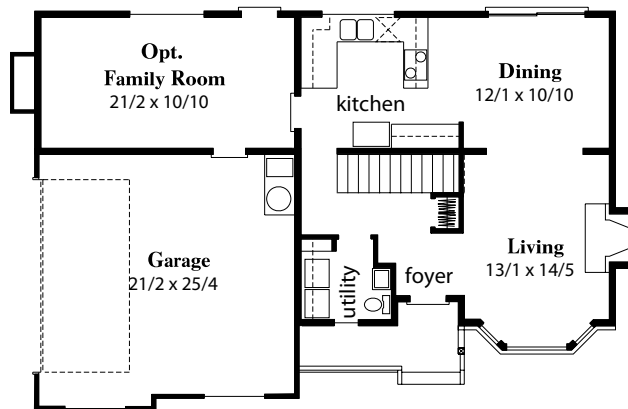


Elevation A

**The Millcreek V**  
**Side Entry Garage**  
**Stock Plan #1390 SEG**

**Special Features:**

- 1390 S.F. Total Living Area  
 694 S.F. Main  
 705 S.F. Upper
- 3 Bedrooms, 2 1/2 Baths
- Elegant Master Suite with Vaulted Ceilings and Walk-in Closet
- Zero Clearance Gas Fireplace in Living Room
- Spacious Kitchen Eating Bar adjacent to Dining Room
- Side entry 2 Car Garage
- Overall Exterior dimensions: 50' width X 33' depth.



Elevation B



In our effort to constantly update and improve our designs, we reserve the right to modify or change our plans

**The Residential Plan Center**

11644 N.E. 80th St. • Kirkland, WA 98033 • (425) 828-4117

[www.NashJonesAnderson.com](http://www.NashJonesAnderson.com)