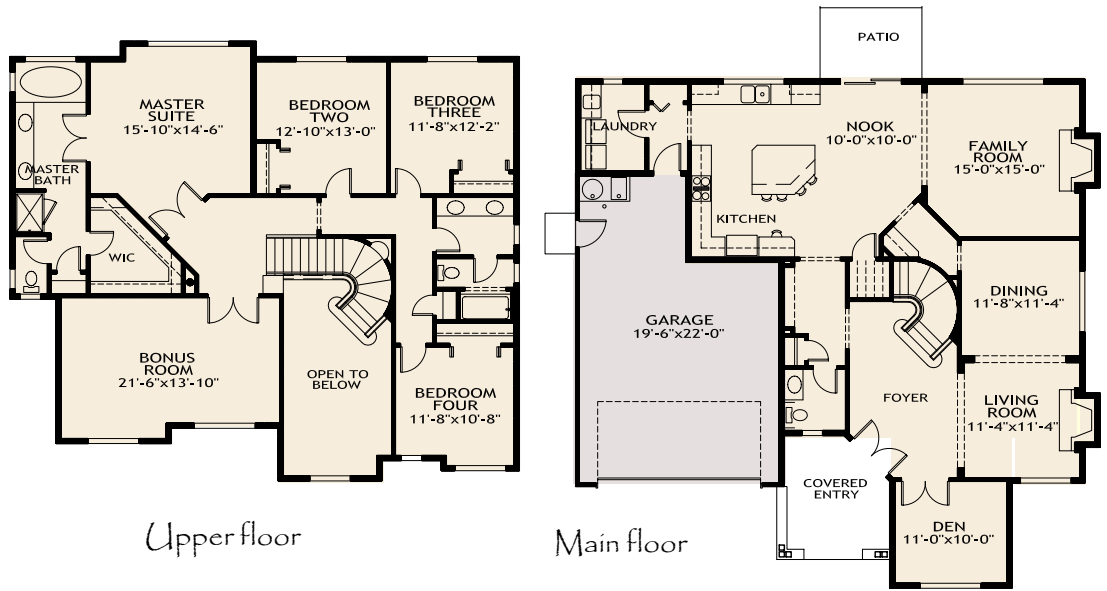


HIDDEN PINES





Upper floor

Main floor

PLAN 3188

- **3188 S.F. Total Living Area**
- 1541 sf Main
- 1647 sf Upper
- 535 sf Garage
- Overall Exterior dimensions:
- 50'-0" width x 50'-0" depth**
- Excludes covered patio/fireplace



HIDDEN PINES

PLAN 3198

• 3198 S.F. Total Living Area

1548 sf Main

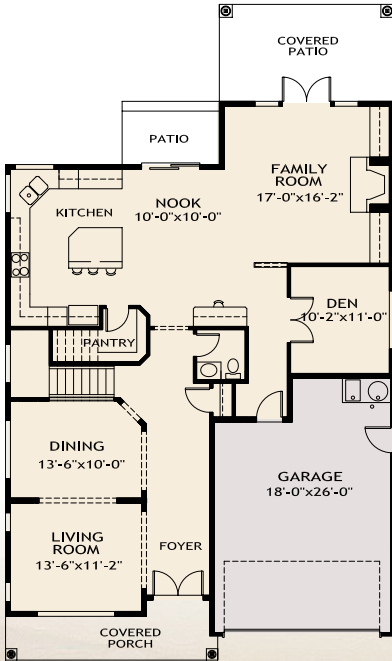
1650 sf Upper

453 sf Garage

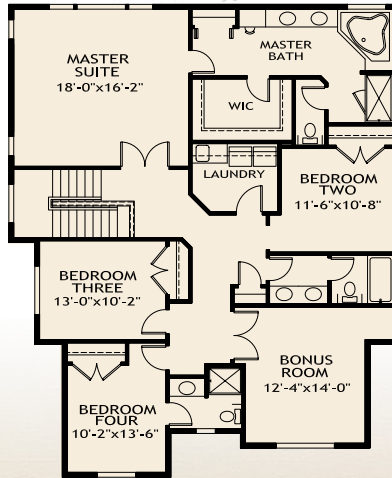
• Overall Exterior dimensions:

40'-0" width x 57'-6" depth

• Excludes covered patio/fireplace

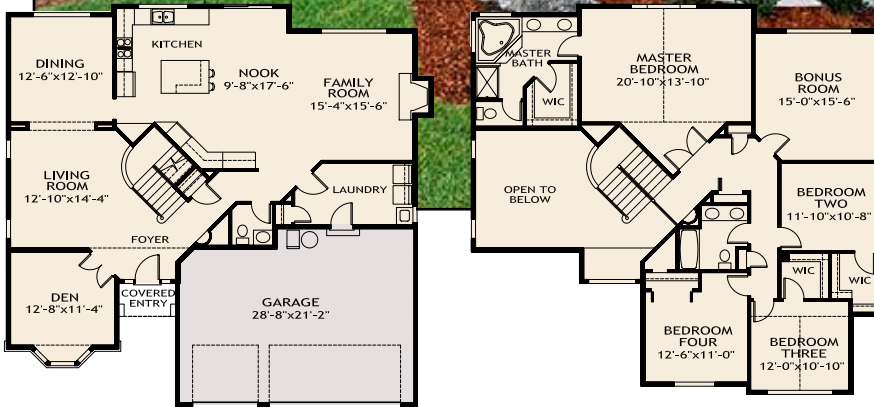


Main floor



Upper floor





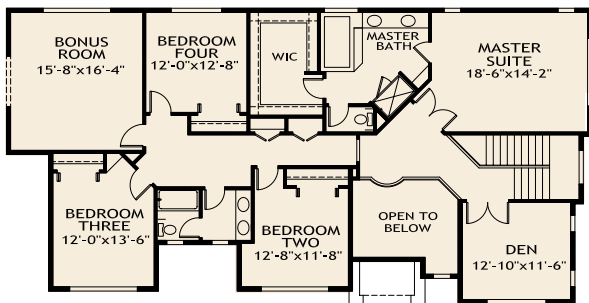
PLAN 3167

- 3167 S.F. Total Living Area
 - 1600 sf Main
 - 1567 sf Upper
 - 601 sf Garage

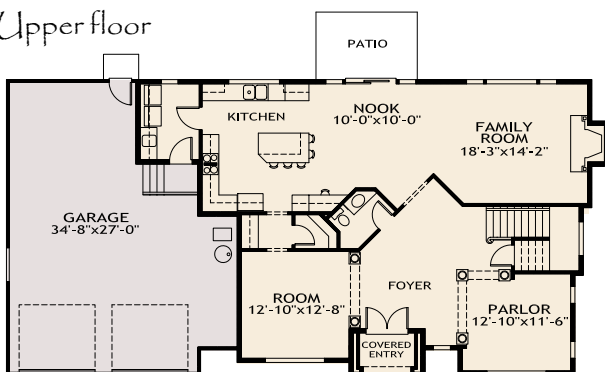
- Overall Exterior dimensions: **50'-0" width x 49'-0" depth**
- Excludes covered patio/fireplace

Main floor

Upper floor



Upper floor



PLAN 3452

- 3452 S.F. Total Living Area
 - 1214 sf Main
 - 1938 sf Upper
 - 795 sf Garage

- Overall Exterior dimensions: **69'-4" width x 35'-0" depth**
- Excludes covered patio/fireplace

Main floor